

Ash Jewellery

Sterling Silver Collection

As part of our Ash Jewellery collection we have a broad range of Sterling Silver Jewellery available which is specifically designed to hold a symbolic amount of a loved ones' ashes.

These pieces are made of high quality 925 Sterling Silver, which means that each piece is made of at least 92.5% pure silver. The remaining 7.5% is an alloy to give strength to the Jewel.

Typical of these pieces of Jewellery is their perfect finish which makes the jewel unrecognisable as an ash holder.

Ash Jewellery Sterling Silver Pendants



AH 004



AH 012



AH 013



AH 031



AH 032



AH 033



AH 034



AH 053



AH 057

EACH PENDANT COMES WITH A PRESENTATION BOX & CHAIN

Ash Jewellery Sterling Silver Pendants



PD 1000



PD 1021



PD 1110



PD 1460



PD 1200



PD 1201

EACH PENDANT COMES WITH A PRESENTATION BOX & CHAIN

Memorial Sterling Silver Bracelet & Beads



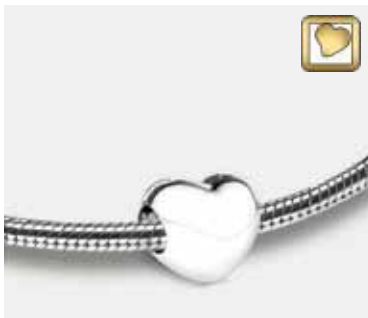
BD 2090



BD 2091



BD 2030



BD 2000



BD 2050



BD 2060



AC 1001

Bracelet sold separately

Ash Jewellery

Stainless Steel Collection

As part of our Ash Jewellery collection we have an extensive range of Stainless Steel Jewellery specifically designed to hold a symbolic amount of a loved ones' ashes.

The range encompasses a broad variety of designs and styles of pendants and each piece of jewellery comes with a Stainless Steel chain and presentation box.

We also have a range of Stainless Steel bracelets and rings and each piece comes with its own presentation box.

Ash Jewellery Stainless Steel Pendants



U013A



U027A



U063A



U066A



U070A



U014A



U013B



AB 001



AB 003



AB 004



AB 005



AB 006

EACH PENDANT COMES WITH A PRESENTATION BOX & CHAIN

Ash Jewellery Stainless Steel



AB 009



U081



U085



U088

Bracelets



U010A
L: 22CM • M: 20 CM



U008A
L: 22CM • M: 20 CM

Charms



U006 C



U008 C